



Sidock Group

ARCHITECTS • ENGINEERS • CONSULTANTS

Corporate Headquarters
45650 Grand River Ave.
Novi, Michigan 48374
Ph: (248)349-4500 • Fax: (248)349-1429

Novi • Wyandotte • Muskegon
Lansing • Gaylord • Sault Ste. Marie
Williamsport, PA • Tampa, FL
www.sidockgroup.com

GENERAL NOTES

- A. REFER TO ELECTRICAL SPECIFICATIONS FOR ADDITIONAL INFORMATION.
- B. REFER TO ARCHITECTURAL AND MECHANICAL DRAWINGS FOR GENERAL SCOPE OF DEMOLITION WORK REQUIRED UNDER THIS CONTRACT AND COORDINATE WITH ELECTRICAL DEMOLITION WORK.
- C. EXTREME CARE SHALL BE TAKEN NOT TO DISRUPT ANY ELECTRICAL SERVICES THAT EXTEND BEYOND THE BOUNDARIES OF THE RENOVATION AREA AND ARE TO REMAIN DURING DEMOLITION. POWER TO EQUIPMENT OUTSIDE THE AREA OF RENOVATION SHALL NOT BE TURNED OFF WITHOUT PROPER PERMISSION FROM OWNER'S REPRESENTATIVE. ANY CIRCUITS AFFECTED BY THIS RENOVATION, WHICH ARE SCHEDULED TO REMAIN SHALL BE PROPERLY REWIRED TO MAINTAIN SERVICE AND COMPLIANCE WITH ALL NATIONAL, STATE, AND LOCAL CODES.

DEMOLITION NOTES

- △ EXISTING ELECTRICAL EQUIPMENT TO REMAIN UNLESS NOTED OTHERWISE.
- △ DISCONNECT AND REMOVE EXISTING LIGHTING FIXTURES, INCLUDING ASSOCIATED CONDUIT AND WIRING BACK TO FIRST JUNCTION BOX AND SAVE WIRING FOR REUSE. NEW LIGHTING FIXTURES TO BE INSTALLED UNDER THIS CONTRACT.
- △ DISCONNECT AND REMOVE EXISTING LIGHTING FIXTURES AND LIGHTING CONTROL DEVICES, INCLUDING ASSOCIATED CONDUIT AND WIRING BACK TO FIRST JUNCTION BOX AND SAVE WIRING FOR REUSE. NEW LIGHTING CONTROL DEVICES AND NEW LIGHTING FIXTURES TO BE INSTALLED UNDER THIS CONTRACT.
- △ DISCONNECT AND REMOVE EXISTING RECEPTACLE(S), INCLUDING ASSOCIATED CONDUIT AND WIRING BACK TO FIRST JUNCTION BOX AND SAVE WIRING FOR REUSE.
- △ DISCONNECT AND REMOVE EXISTING WALL MOUNTED LIGHTING SCONCE, INCLUDING ALL ASSOCIATED CONDUIT AND WIRING BACK TO SOURCE AND MARK BREAKER AS SPARE.
- △ EXISTING EMERGENCY LIGHTING FIXTURE TO REMAIN.
- △ DISCONNECT AND REMOVE EXISTING EXIT LIGHTING FIXTURE, INCLUDING ASSOCIATED CONDUIT AND WIRING BACK TO FIRST JUNCTION BOX AND SAVE WIRING FOR REUSE.
- △ DISCONNECT AND REMOVE EXISTING EMERGENCY LIGHTING FIXTURE, INCLUDING ALL ASSOCIATED CONDUIT AND WIRING BACK TO FIRST JUNCTION BOX AND SAVE WIRING FOR REUSE.
- △ DISCONNECT AND REMOVE EXISTING RECEPTACLE AND DATA OUTLETS FOR EXISTING TELEVISION, INCLUDING ASSOCIATED CONDUIT AND WIRING BACK TO FIRST JUNCTION BOX AND SAVE WIRING FOR REUSE. TELEVISION LOCATION TO BE RELOCATED UNDER THIS CONTRACT.
- △ DISCONNECT AND REMOVE EXISTING LIGHTING CONTROL DEVICE AND SAVE WIRING FOR REUSE WITHIN JUNCTION BOX. A NEW LIGHTING CONTROL DEVICE SHALL BE INSTALLED UNDER THIS CONTRACT.
- △ DISCONNECT AND REMOVE EXISTING DISCONNECT SWITCH FOR AIR CONDITIONING UNIT, INCLUDING ASSOCIATED CONDUIT AND WIRING BACK TO SOURCE AND MARK BREAKER AS SPARE.
- △ DISCONNECT AND REMOVE EXISTING LIGHTING FIXTURE LENS AND REPLACE IN KIND. RELAMP EXISTING LIGHTING FIXTURES IN SPACE WITH SAME COLOR TEMPERATURE BULBS.
- △ DISCONNECT AND REMOVE EXISTING SITE LIGHTING POLE FIXTURE, INCLUDING ASSOCIATED CONDUIT AND WIRING BACK TO SOURCE.
- △ DISCONNECT AND REMOVE EXISTING LIGHTING FIXTURES, INCLUDING CONDUIT AND WIRING BACK TO SOURCE AND MARK BREAKER AS SPARE.
- △ FURNISH AND INSTALL UL LISTED EXTENSION RING FOR OUTLET BOX SO THAT OUTLET IS FLUSH WITH FINISHED WALL SURFACE. REFER TO ARCHITECTURAL PLANS FOR ADDITIONAL INFORMATION.
- △ DISCONNECT AND REMOVE EXISTING DATA OUTLETS, INCLUDING ASSOCIATED CONDUIT AND WIRING BACK TO FIRST JUNCTION BOX AND SAVE WIRING FOR REUSE.
- △ DISCONNECT AND REMOVE EXISTING POWER CONNECTION TO AUTOMATIC DOOR, INCLUDING ASSOCIATED CONDUIT AND WIRING BACK TO FIRST JUNCTION BOX AND SAVE WIRING FOR REUSE.
- △ DISCONNECT AND REMOVE ANY ASSOCIATED CONDUIT AND WIRING REMAINING FROM ABANDONED PAY TELEPHONE BACK TO SOURCE.
- △ DISCONNECT EXISTING FEEDER AND BRANCH WIRING FROM EXISTING DISTRIBUTION PANEL AND SAVE FEEDER AND BRANCH WIRING FOR REUSE. CONTRACTOR SHALL FURNISH AND INSTALL A NEW DISTRIBUTION PANEL UNDER THIS CONTRACT. RECONNECT EXISTING SERVICE AND BRANCH WIRING SAVED FOR REUSE.
- △ DISCONNECT AND REMOVE EXISTING SURFACE MOUNTED LIGHTING FIXTURES, INCLUDING ASSOCIATED CONDUIT AND WIRING BACK TO FIRST JUNCTION BOX AND SAVE WIRING FOR REUSE. NEW LIGHTING FIXTURES TO BE INSTALLED UNDER THIS CONTRACT.
- △ DISCONNECT AND REMOVE EXISTING SOFFIT LIGHT FIXTURE, INCLUDING ALL ASSOCIATED CONDUIT AND WIRING BACK TO FIRST JUNCTION BOX AND SAVE WIRING FOR REUSE. LIGHT FIXTURE TO BE REPLACED UNDER THIS CONTRACT. REFER TO DRAWING EL-200 FOR ADDITIONAL INFORMATION.
- △ DISCONNECT AND REMOVE EXISTING ELECTRICAL EQUIPMENT ASSOCIATED WITH EXISTING WALK-IN COOLER, INCLUDING ALL ASSOCIATED CONDUIT AND WIRING BACK TO SOURCE. A NEW WALK-IN COOLER SHALL BE FURNISHED AND INSTALLED IN A NEW LOCATION UNDER THIS CONTRACT. REFER TO DRAWING EP-200 FOR ADDITIONAL INFORMATION.
- △ DISCONNECT AND REMOVE EXISTING ELECTRICAL EQUIPMENT IN THIS SPACE, INCLUDING ALL ASSOCIATED CONDUIT AND WIRING BACK TO SOURCE. A NEW WALK-IN FREEZER IS TO BE FURNISHED AND INSTALLED IN THIS LOCATION UNDER THIS CONTRACT. REFER TO DRAWING EP-200 FOR ADDITIONAL INFORMATION.
- △ EXISTING IT EQUIPMENT RACK TO BE DISCONNECTED, REMOVED, AND RELOCATED UNDER THIS CONTRACT. IT CONTRACTOR RESPONSIBLE FOR DISCONNECTION, REMOVAL, AND RELOCATION OF EXISTING IT RACK, PATCH PANEL CABLING, TERMINATIONS, ETC. ELECTRICAL CONTRACTOR TO FURNISH AND INSTALL NEW RECEPTACLES IN NEW IT ROOM FOR RELOCATED IT RACK POWER, REFER TO DRAWING EP-200 FOR ADDITIONAL INFORMATION.

Client:

Brownstown Township

Project:

Brownstown Community Center Renovation & Addition

21311 Telegraph Rd.
Brownstown, MI

Seal:

| Date | Issued For |
|------------|--------------|
| 11/05/2024 | PROGRESS SET |
| 12/20/2024 | 100% CD |
| 01/07/2025 | IFC |
| 01/27/2025 | ADDENDUM #3 |
| 01/29/2025 | ADDENDUM #4 |

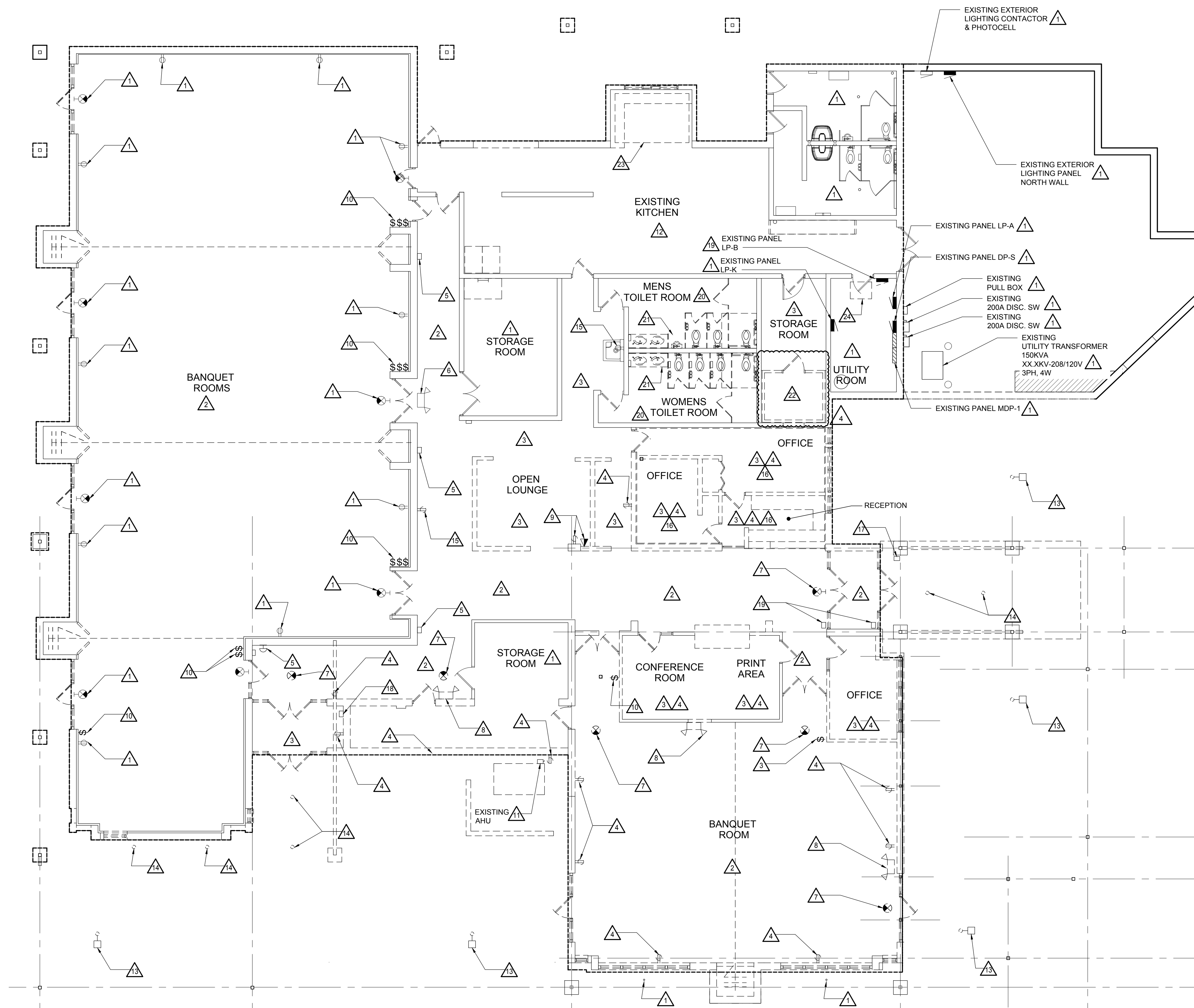
Drawn: JDM
Checked: LMR
Approved: SRK

Sheet Title:
**ELECTRICAL
DEMOLITION
FLOOR PLANS**

Project Number: 24361.A

Sheet Number: **ED-100**

THIS MATERIAL IS THE EXCLUSIVE PROPERTY OF SIDOCK GROUP, INC. AND CANNOT BE REPRODUCED, COPIED, OR USED IN ANY MANNER WITHOUT THE WRITTEN CONSENT OF SIDOCK GROUP, INC. © 2024



ELECTRICAL DEMOLITION FLOOR PLAN
 SCALE: 1/8"=1'-0"

N:\2024 Project Files\436\Brownstown - Remodel and Addition\CAD\08 Electrical\436.dwg Tue, 28 Jan 2025 - 1:57pm