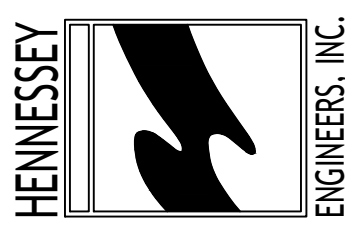
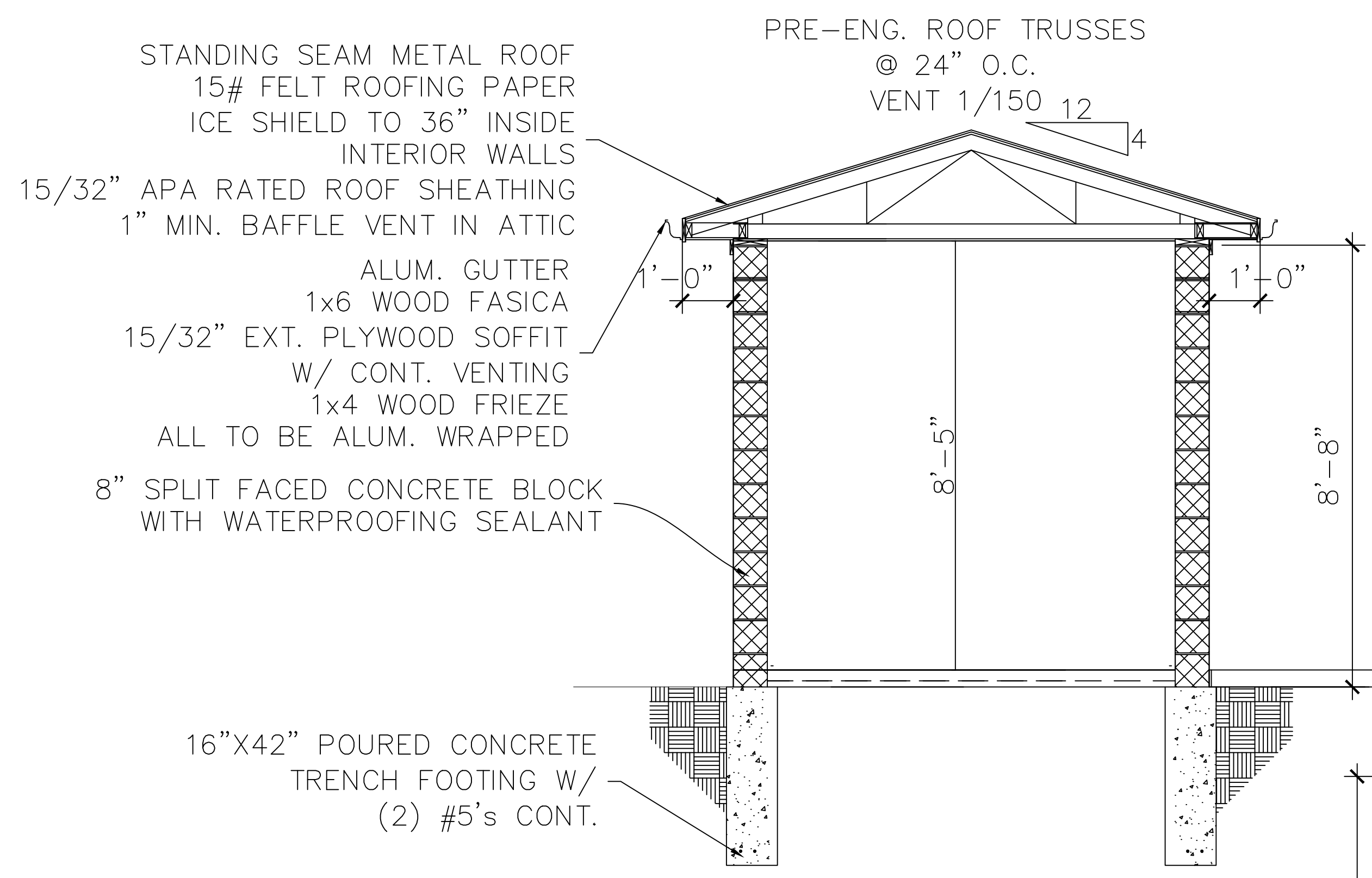


REVISIONS

ENGINEERING THE FUTURE.
13500 REECK ROAD
SOUTHGATE, MI 48195
(734) 759-1600
FAX (734) 282-6566
WWW.HENGINEERS.COM



TITLE
VICTORY PARK RESTROOM BUILDING
CITY OF BELLEVILLE
WAYNE COUNTY
MICHIGAN



BUILDING SECTION
SCALE: 1/4"=1'-0"

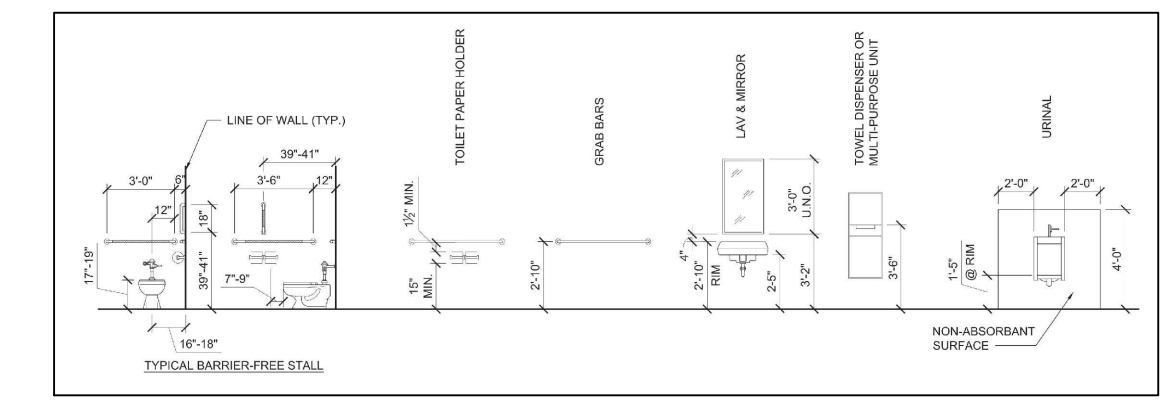
TOILET ROOM ACCESSORIES
ALL TO BE SUPPLIED AND INSTALLED BY CONTRACTOR

MIRROR	BOBRICK B-293-1830 VANDAL RESISTANT 18"X30" STAINLESS STEEL MIRROR. 1 PER RESTROOM.
SOAP DISPENSER	BOBRICK B-4112 WALL MTD. 40 OZ. 1 PER RESTROOM.
PAPER TOWEL AND WASTE RECEPTACLE	BOBRICK B-3944 SURF. MTD. S.S.
TOILET TISSUE DISPENSER	BOBRICK B-4288 SURF. MTD. MULTI-ROLL TOILET TISSUE DISPENSER. 1 PER RESTROOM
STAINLESS STEEL GRAB BARS	BOBRICK STAINLESS STEEL 1-1/2" PEENED FINISH.
HOOK & BUMPER	BOBRICK B212, 1 PER RESTROOM
TOILET TISSUE DISPENSER	BOBRICK B-4288 SURF. MTD. MULTI-ROLL TOILET TISSUE DISPENSER. 1 PER RESTROOM
STAINLESS STEEL GRAB BARS	BOBRICK STAINLESS STEEL 1-1/2" PEENED FINISH.
HOOK & BUMPER	BOBRICK B212, 1 PER RESTROOM
BABY CHANGING STATION	BOBRICK/KOALA CARE KB200-01 GREY POLYETHYLENE STANDARD HORIZONTAL MTD. W/ S.S. FLANGE

OR APPROVED EQUAL

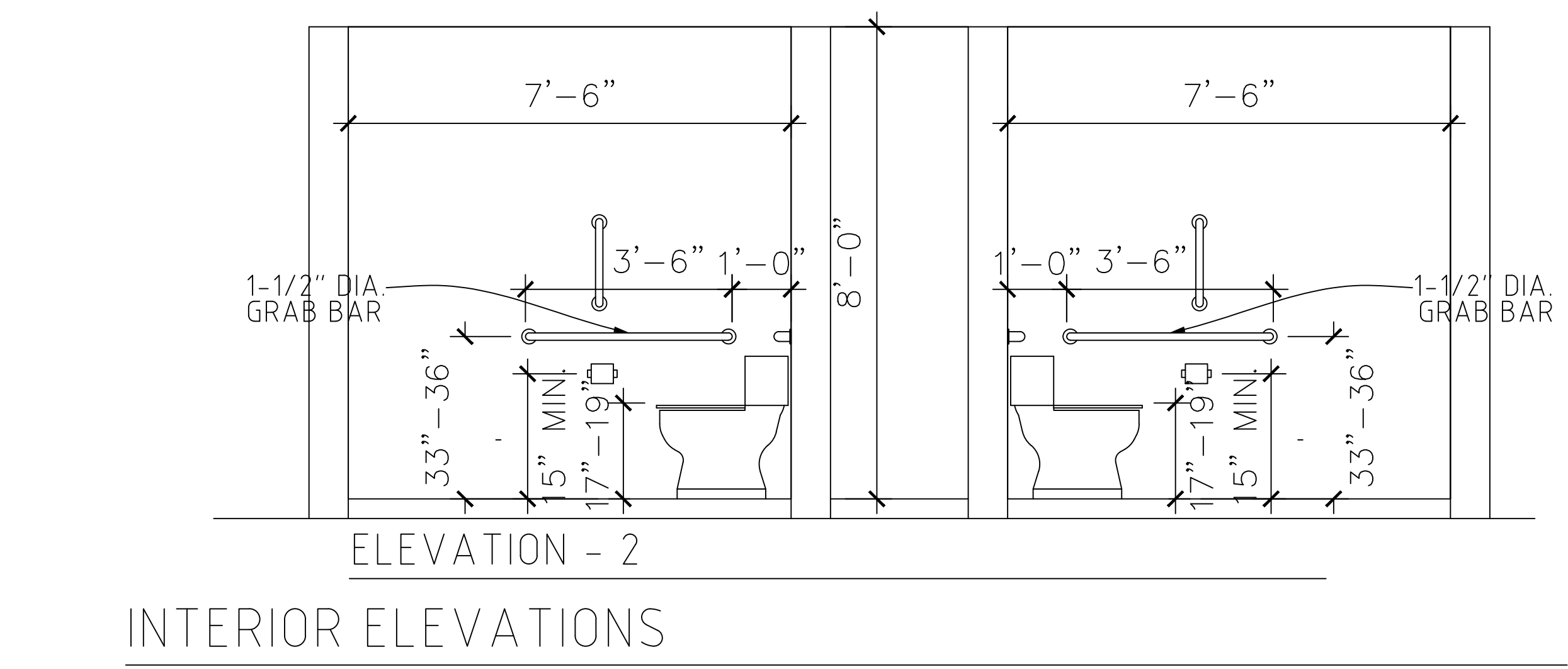
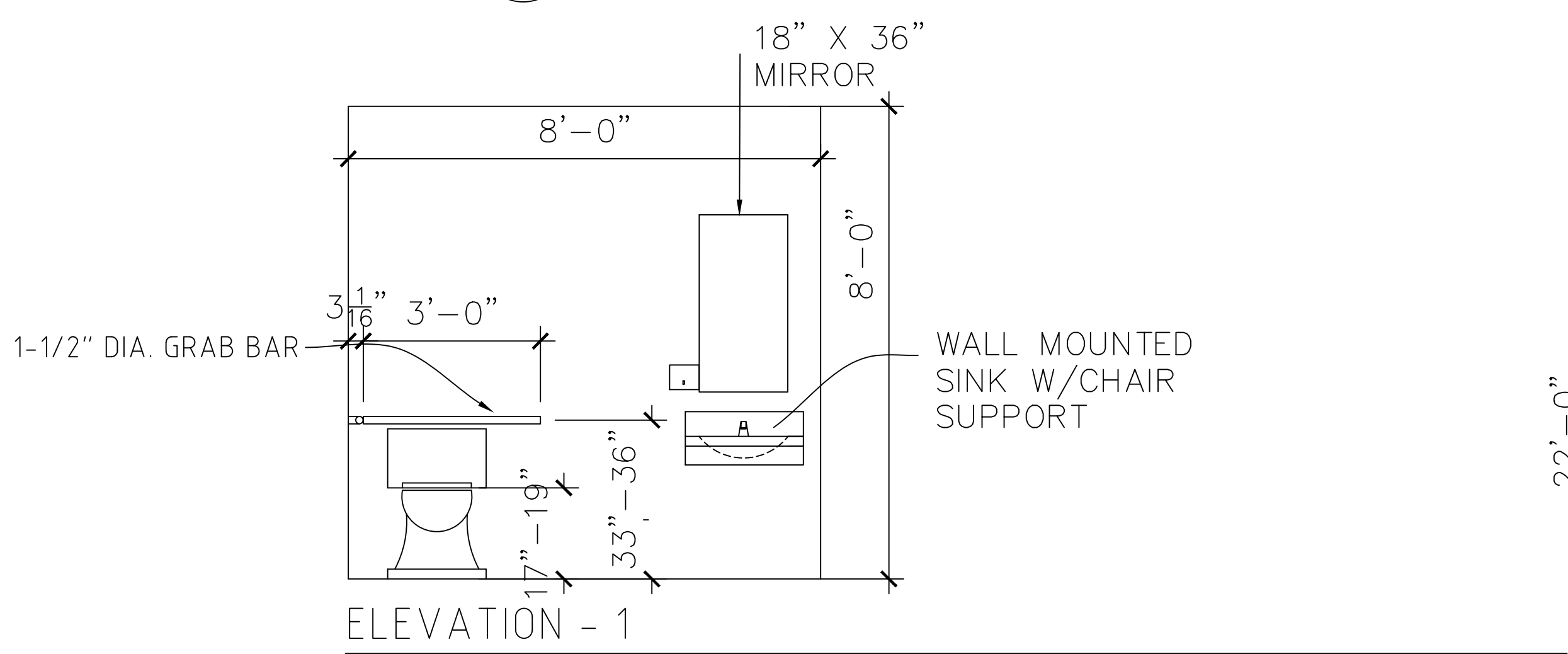
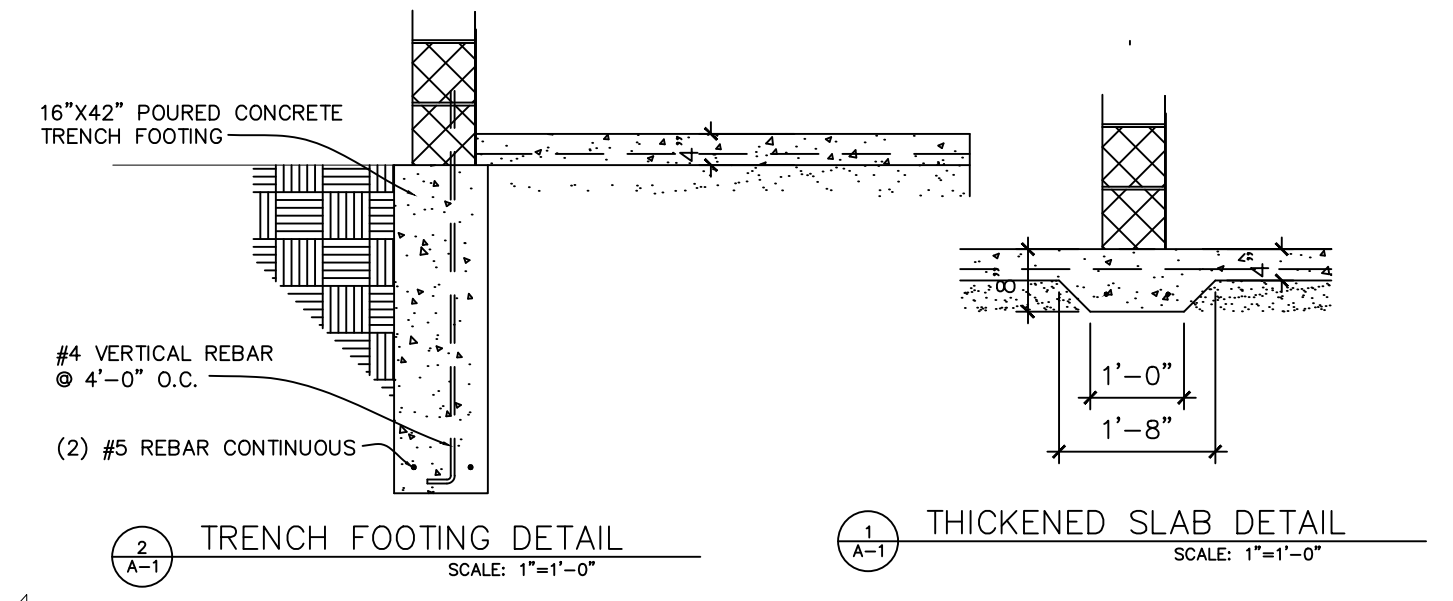
TOILET ROOM FIXTURES
ALL TO BE SUPPLIED AND INSTALLED BY CONTRACTOR *OR APPROVED EQUAL*

TOILETS	AMERICAN STANDARD - MADERA FLOW WISE 16-1/2" HEIGHT ELONGATED TOILET W/ TOP SPUD ADA SEAT
FLUSH VALVE	SLOAN - REGAL MODEL 111 FLUSHOMETER
LAV SINKS	AMERICAN STANDARD - LUCERNE HALL WUNG LAV W/ JAY R SMITH LAV SUPPORT - CONCEALED ARMS
FAUCET	CHICAGO FAUCETS - 802-335 absd METERING FAUCET WITH MIXING VALVE
TOILET TISSUE DISPENSER	BOBRICK B-4288 SURF. MTD. MULTI-ROLL TOILET TISSUE DISPENSER. 1 PER RESTROOM
STAINLESS STEEL GRAB BARS	BOBRICK STAINLESS STEEL 1-1/2" PEENED FINISH.
HOOK & BUMPER	BOBRICK B212, 1 PER RESTROOM
BABY CHANGING STATION	BOBRICK/KOALA CARE KB200-01 GREY POLYETHYLENE STANDARD HORIZONTAL MTD. W/ S.S. FLANGE

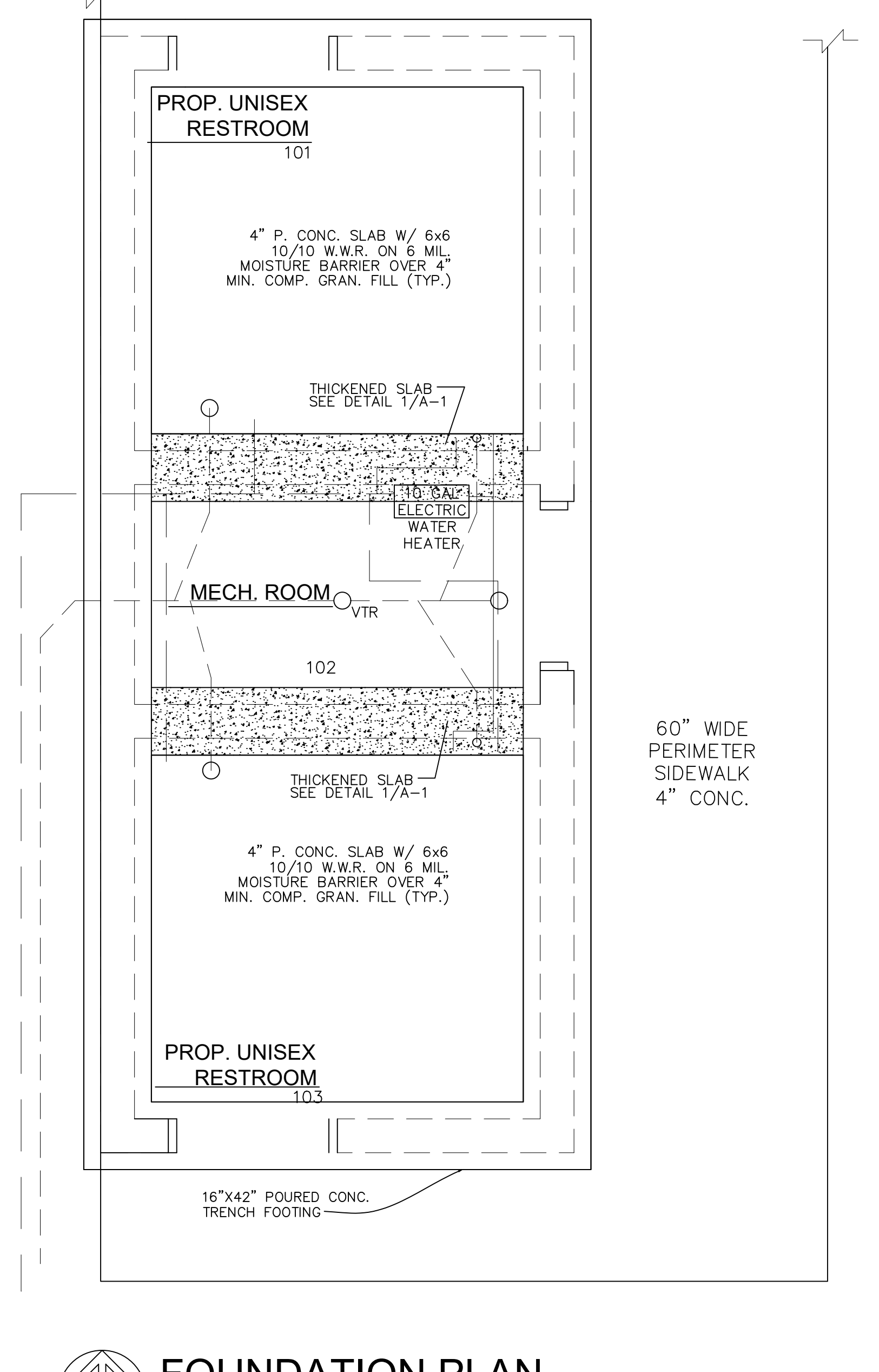
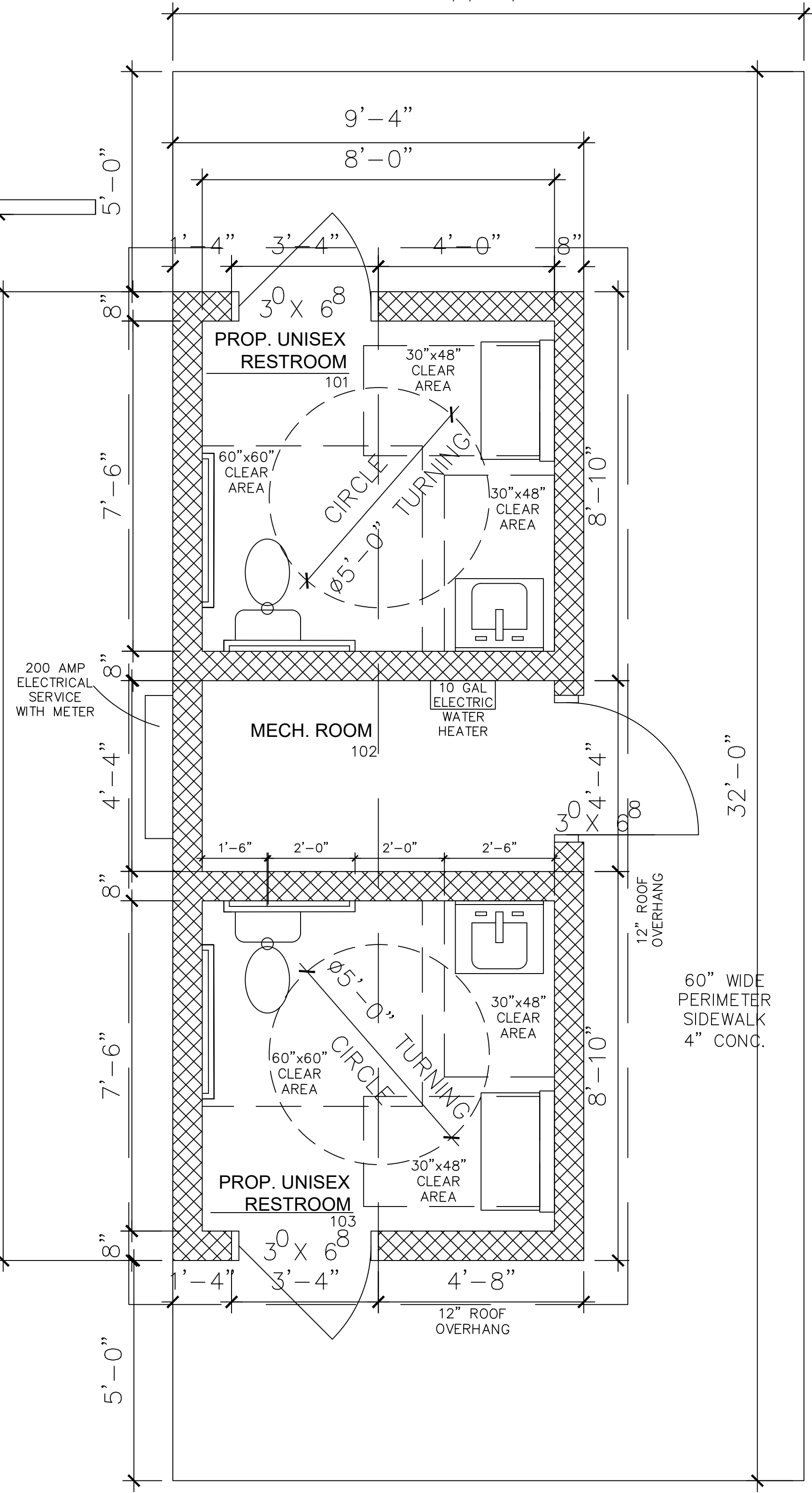


FIXTURE CONNECTIONS SHALL BE IN ACCORDANCE WITH THE FOLLOWING TABLE:

FIXTURE	SOIL OR WASTE	VENT	TRAP	HOT WATER	COLD WATER
WATER CLOSETS	4"	2"			1"
URINALS	2"	1-1/2"			3/4"
LAVATORY	1-1/2"	1-1/2"	1-1/4"	1/2"	1/2"
SINK	1-1/2"	1-1/2"	1-1/4"	1/2"	1/2"



INTERIOR ELEVATIONS



FOUNDATION PLAN
SCALE: 1/4" = 1'-0"

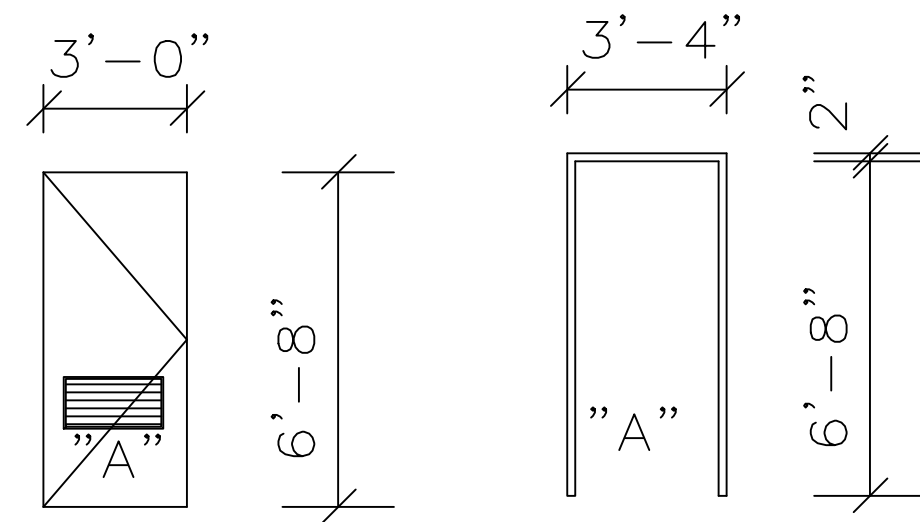
ROOM FINISH SCHEDULE:

GWB-1 PAINT FINISH

RM NO.	ROOM NAME	BASE	FLOOR	WALLS				FIN.	CEILING		REMARKS
				NORTH	EAST	SOUTH	WEST		MAT.	HT.	
101	UNISEX RSTRM	NONE	2 PART EPOXY CONC.	CMU	CMU	CMU	CMU	P-1	GYP.	8'-5"	
101	MECH. ROOM	NONE	2 PART EPOXY CONC.	CMU	CMU	CMU	CMU	P-1	GYP.	8'-5"	
101	UNISEX RSTRM	NONE	2 PART EPOXY CONC.	CMU	CMU	CMU	CMU	P-1	GYP.	8'-5"	

DOOR AND FRAME SCHEDULE:

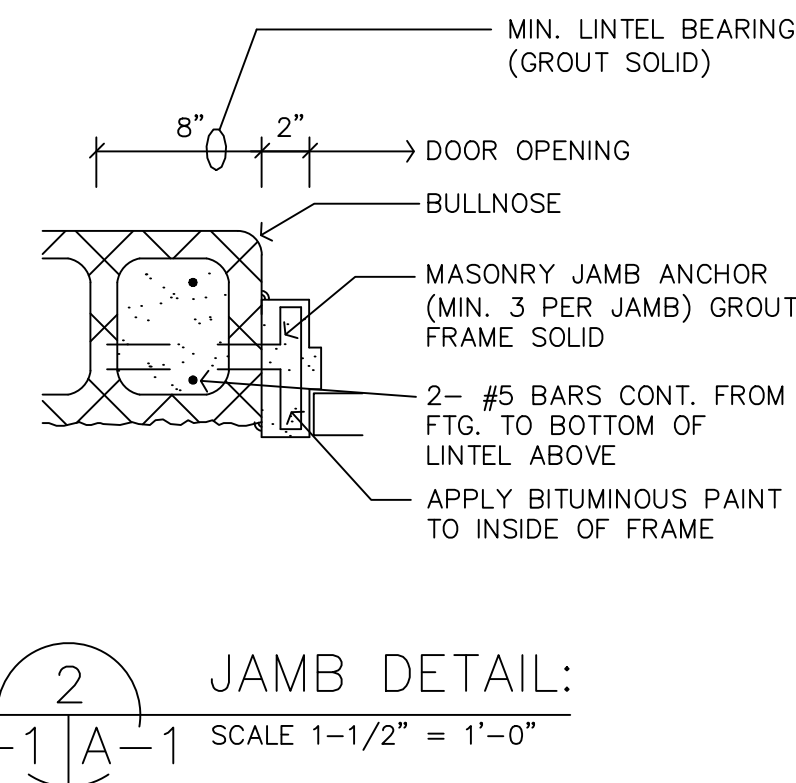
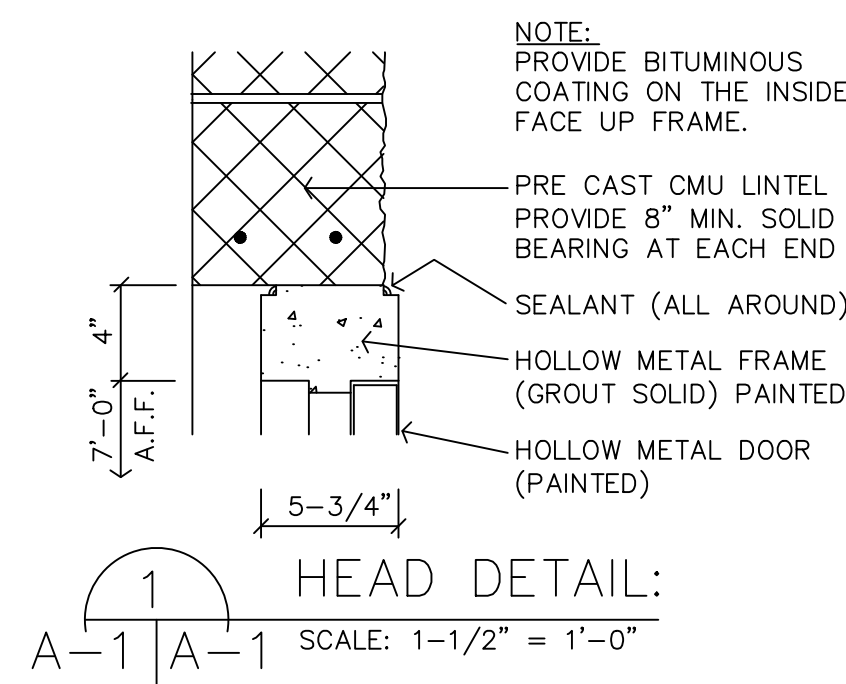
DOOR NO.	DOOR SIZE	DOOR		FRAME		DET. NO.	LABEL	HDWR NO.	REMARKS
		TYPE	MAT'L	TYPE	MAT'L				
101	3'-0"X6'-8" X 1 3/4"	A	HM	A	HM			01	PRIVACY LOCK IN KNOB, LOUVER IN DOOR EXTERIOR DEADBOLT
101	3'-0"X6'-8" X 1 3/4"	A	HM	A	HM			02	STORAGE KEY LOCK IN KNOB W/DEADBOLT LOUVER IN DOOR
101	3'-0"X6'-8" X 1 3/4"	A	HM	A	HM			01	PRIVACY LOCK IN KNOB, LOUVER IN DOOR EXTERIOR DEADBOLT



HARDWARE SETS

PRIVACY
 1) HINGES: CONTINUOUS BY MFR.
 CLOSER: HEAD TYPE
 LOCK: IN HANDLE
 ADA LEVER HANDLES EACH SIDE
 ADA ALUM. THRESHHOLD
 EXTERIOR DEADBOLT

STORAGE
 2) HINGES: CONTINUOUS BY MFR.
 CLOSER: HEAD TYPE
 LOCK: CYLINDER
 LEVER HANDLES
 EXTERIOR DEADBOLT



DOOR TYPES: FRAME TYPES:

GENERAL NOTES:

1. THE ARCHITECT AND ENGINEER IS NOT RESPONSIBLE FOR THE MEANS AND METHODS OF CONSTRUCTION, NOR FOR SAFETY ON THE JOBSITE. THESE RESPONSIBILITIES ARE INTENDED TO BE, AND REMAIN SOLELY THOSE OF THE GENERAL CONTRACTOR, CONSTRUCTION MANAGER, AND/OR JOBSITE SUPERINTENDENT.
2. DO NOT SCALE DRAWINGS, USE FIGURED DIMENSIONS ONLY. IF A DISCREPANCY EXISTS, CONSULT ARCHITECT FOR CLARIFICATION.
3. CONTRACTOR SHALL VISIT THE SITE AND CHECK THE EXISTING CONDITIONS BEFORE SUBMISSION OF BID(S). NO ALLOWANCE SHALL BE MADE IN BEHALF OF EXTRA EXPENSES DUE TO FAILURE TO MAKE SUCH A THOROUGH EXAMINATION.
4. CONTRACTOR SHALL COMPLY WITH ALL LAWS, ORDINANCES, AND CODES OF THE CITY OF ALLEN PARK AND THE STATE OF MICHIGAN.
5. CONTRACTOR TO SECURE AND FURNISH ALL PERMITS AS REQUIRED BY LOCAL BUILDING AUTHORITIES.
6. ALL MATERIALS ARE NEW UNLESS OTHERWISE NOTED.

PLUMBING NOTES:

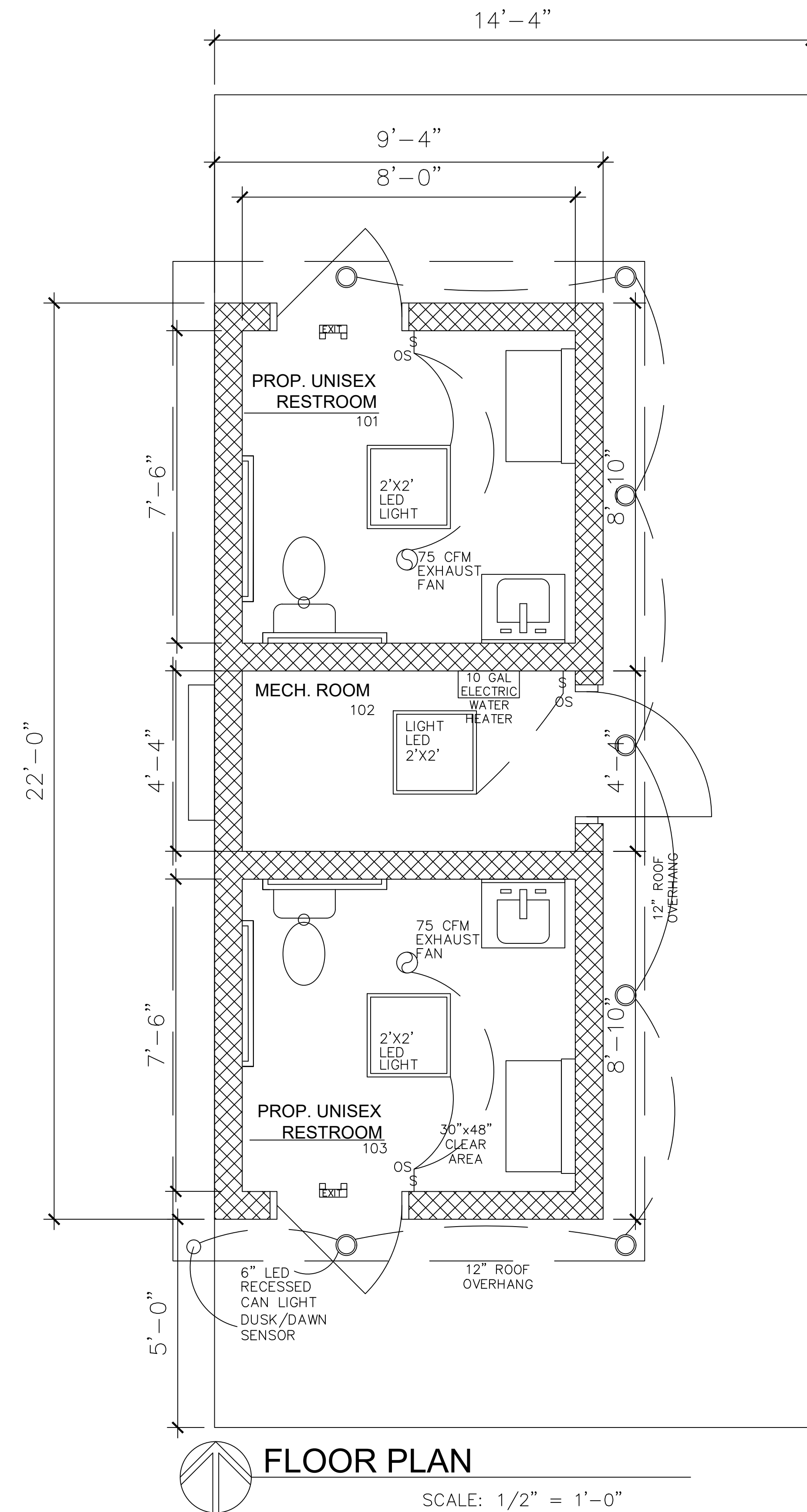
1. PLUMBING DRAWINGS TO BE READ IN CONJUNCTION WITH ARCHITECTURAL DRAWINGS.
2. ALL WORK SHALL COMPLY WITH THE MICHIGAN PLUMBING CODE, INCORPORATING THE 2009 EDITION OF THE INTERNATIONAL PLUMBING CODE AND/OR LOCAL CODES HAVING JURISDICTION.
3. MINIMUM HORIZONTAL SLOPE FOR SANITARY WASTE AND STORM PIPING SHALL BE 1/8" PER FOOT.
4. FIELD VERIFY ALL EXISTING CONDITIONS, ELEVATIONS, DIRECTION OF FLOW AND SIZES OF PIPING PRIOR TO INSTALLATION.
5. MAINTAIN AT LEAST 10'-0" AWAY FROM ANY FRESH AIR INTAKES WITH EXHAUST FROM WATER HEATER, PLUMBING VENTS, EXHAUST FANS, ETC.
6. INSULATE ALL HOT AND COLD WATER PIPING WITH 1" FIBERGLASS INSULATION WITH VAPOR BARRIER.
7. PROVIDE AND INSTALL CLEAN OUTS AT EVERY CHANGE IN DIRECTION 45° OR MORE.
8. GAS PIPING SHALL BE ASTM A-53 BLACK STEEL SCHEDULE 40 THREADED FITTING.
9. ALL POTABLE WATER (HOT AND COLD) ABOVE GROUND SHALL BE TYPE-"L" HARD DRAWN SEAMLESS COPPER TUBE, ASTM B88 WITH SOLDER TYPE JOINTS.
10. ALL POTABLE WATER JOINTS BELOW GROUND SHALL BE TYPE-"K" HARD DRAWN SEAMLESS COPPER TUBE, ASTM B88 WITH SOLDER TYPE JOINTS.
11. VENT PIPE SHALL BE SCHEDULE 40 PVC EXCEPT AT LOCATIONS WHERE VENT PIPING PASSES THRU OPEN RETURN AIR PLENUM. PROVIDE CAST-IRON AS REQUIRED.
12. SANITARY PLUMBING SHALL BE SCHEDULE 40 PVC
13. STORM WATER TO SANITARY SEWER PROHIBITED.

GENERAL ELEC. NOTES:

1. THE ARCHITECT/ENGINEER IS NOT RESPONSIBLE FOR THE MEANS AND METHODS OF CONSTRUCTION, NOR FOR THE SAFETY ON THE JOB SITE. THESE REMAIN SOLELY THE RESPONSIBILITIES OF THE GENERAL CONTRACTOR, C.M. AND/OR JOB SITE SUPERINTENDENT.
2. COORDINATE ALL CONSTRUCTION ACTIVITIES WITH OWNER.
3. CONTRACTOR SHALL COMPLY WITH ALL LAWS, ORDINANCES, AND CODES OF THE CITY OF BELLEVILLE.
4. CONTRACTOR SHALL SECURE AND PAY FOR ALL NECESSARY FEES AND PERMITS REQUIRED IN THE PERFORMANCE OF THE WORK.
5. CONTRACTOR(S) SHALL VISIT THE SITE AND CHECK THE EXISTING CONDITIONS BEFORE SUBMISSION OF BIDS(S). NO ALLOWANCE SHALL BE MADE IN BEHALF OF EXTRA EXPENSES DUE TO THE FAILURE TO MAKE SUCH A THOROUGH EXAMINATION.
6. ALL ELECTRICAL WORK AND EQUIPMENT SHALL COMPLY WITH THE LATEST EDITION OF THE N.E.C., LOCAL AND STATE CODES, ORDINANCES AND REGULATIONS INCLUDING THE OCCUPATIONAL AND HEALTH ACT (OSHA) COORDINATE SERVICE TO BUILDING WITH DTE.
7. COORDINATE COMPLETE INSTALLATION AND REQUIREMENTS WITH DTE.

LIGHTING PLAN NOTES:

1. ALL ROOMS TO HAVE OCCUPANCY SENSORS ON MAIN LIGHTS
2. EXTERIOR SOFFIT LIGHTS TO BE DUSK/DAWN SENSOR CONTROLLED



PROJECT NUMBER:
85317

DATE:
6/19/2023

SCALE:
1/2"=1'-0"

DESIGNED BY:
RDP

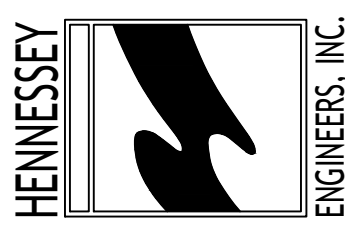
DRAWN BY:
RDP

CHECKED BY:

APPROVED BY:

REVISIONS

ENGINEERING THE FUTURE.
 13500 REECK ROAD
 SOUTHGATE, MI 48195
 (734) 759-1600
 FAX (734) 282-6566
 WWW.HENGINEERS.COM



TITLE
VICTORY PARK RESTROOM BUILDING
CITY OF BELLEVILLE
WAYNE COUNTY
MICHIGAN

SHEET
A-2